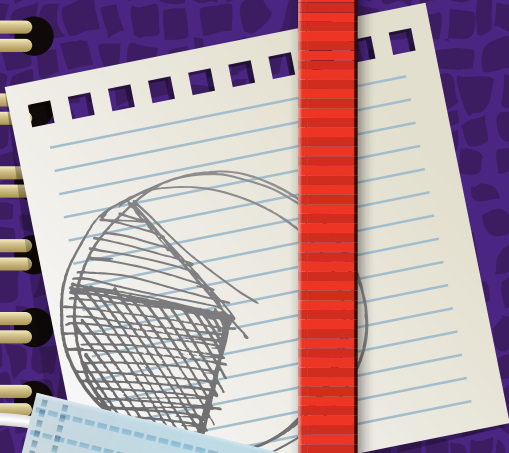


*"With the new day
comes new strength
and
new thoughts."
Eleanor Roosevelt*

ANNUAL REPORT 2020

My Journal

TESTING OUR STRENGTH



"When I was a boy, and I would see scary things in the news, my mother would say to me, 'Look for the helpers. You will always find people who are helping.' To this day, especially in times of 'disaster,' I remember my mother's words and I am always comforted by realizing that there are still so many helpers – so many caring people in this world." Fred Rogers

To my TEEG Community and Family –

TEEG and the Northeast community are integrally connected. The community gives to TEEG, and we give back in turn. As the past year has shown, the bonds of our mutual support are never more apparent, or needed, than in times of crisis and uncertainty. When I refer to the "community," it is the collective sum of the individuals and groups who provide the power that moves TEEG through the year.

- ✓ You are the businesses that have given for many years, even in times of uncertainty, to provide financial support, volunteer services, expertise, and product that support our fundraisers and programs.
- ✓ You are individuals who want to help a neighbor with financial support, volunteer service, a donation of food for our pantry, and so much more.
- ✓ You are our board members, who give selflessly of your time, talent, treasure, and passionate support.
- ✓ You are local churches, schools, and service groups who organize fundraisers and run drives that support our community and youth programs.
- ✓ You are the community members who participate in and contribute to our fundraisers.
- ✓ You are the TEEG Ambassadors, who bid high at our Have a Heart Charity Auction.
- ✓ You are the funders who choose to support programs that reflect your missions.
- ✓ You are our clients who, after gratefully receiving a helping hand, want to pay it forward to others.

Without all of you, TEEG could not do the work we love to do. When the pandemic forced us all to lockdown in March, the community stepped up. Long time supporters, new donors, foundations, and helpful neighbors came forward to assure that we would continue to meet the need.

Many gave what they could; some offered their stimulus checks. Volunteers called to see how they could help. A local farmer set up milk donations for local children. Restaurants provided meals for families through local lunch programs, and on and on. And when you gave more to TEEG, we adapted quickly to give back remotely.

Yes, the time we live in is uncertain. What lies ahead is unknown to all of us, but I can assure you that TEEG will be here, ready to serve, whatever the need. You can count on us to provide a warm welcome, a variety of solutions, and the opportunity to remove obstacles.

I hope, after reading through Testing our Strength, you will be inspired to join us.

With deep appreciation,

Anne Miller



Cathy and Laura collected Back to School items.



Volunteers helped out at the November Food Drive.

Notes on TEEG caring through challenging times

Summer 2019

Food Drive for Back to School - I love local partners who love to help and the folks at DATCO are a great example of this. In July, they reached out to TEEG to arrange two "Stuff a Bus" events that helped to fill the tables and the hearts of local students as they headed back to school.

TEEG named YSB - In 2019, TEEG was named by the State of Connecticut as the Youth Service Bureau for the towns of Thompson, Pomfret, Putnam and Woodstock. I am so proud of our Youth Program staff who worked tirelessly with area youth and their families. They advocated for children and their families in our area by finding ways to help them connect to their communities, locate roads to success, and improve their lives together.

Our Father's Table - I am grateful for the help that local restaurant Our Father's Table provided by contributing 10% of their sales to us in the month of August. TEEG is delighted to receive this local and generous support!

Killingly Bike Night - I always have fun working at the Killingly Recreation Department "Bike Night." Each August they provide entertainment while raising money for local groups. For the third year, TEEG staff and board members donned their event staff t-shirts and helped to direct traffic and collect donations.

Back to School Distribution - I know that the very best students come to school prepared. Thanks to friends and neighbors in our community, TEEG ensures that our local students are ready to succeed. Youth and their families select the items they need and choose the colors they like best. The back to school event is set up like a local stationary store, allowing each child to arrive in style.

American Legion Breakfast - I think breakfast is the most important meal of the day and I was delighted to hear that a local organization was willing to lend a hand. They worked with our board's Funds Development Committee to arrange a Sunday morning breakfast that was both delicious and a real success.



Jane Ellison and Erica Groh told me they had a great time at the Back to School Drive.

TEEG Programs and Lives Touched

July 1, 2019 - June 30, 2020

| | |
|--|---------------|
| Early Childhood and Community Education | 3,620 |
| Focus on Family | |
| Hand in Hand | |
| Parent/Child Playgroup | |
| Diaper Assistance | |
| School Readiness | |
| Gamblers Anonymous | |
| Anger Aside | |
| Adult Children of Alcoholics | |
| Youth Services | 4,070 |
| All Star Adventure Program (ASAP) | |
| Back to School | |
| Campership Program & MARS Scholarship | |
| Got Drama? | |
| Adolescent Therapeutic Support Services | |
| Juvenile Review Board (JRB) | |
| Scholarship | |
| Youth Service Bureau (YSB) | |
| Hang Time | |
| Community and Income Qualified Programs | 51,116 |
| Case Management and Budgeting | |
| Client Relief and Private Fund Fuel Assistance | |
| Clothing Assistance | |
| Community Garden and Nutrition Education | |
| Community Outreach | |
| Food Systems (Gleaning, Food Rescue, Hub) | |
| Holiday Giving | |
| Information & Referral Consultation | |
| Monthly & Emergent Food Distribution | |
| Operation Fuel | |
| Private Fund Energy Assistance | |
| Salvation Army | |
| Volunteer Services & Giving Back | 2,012 |
| Community Service | |
| Volunteering Opportunities | |
| Senior Services | 6,644 |
| Benefits Counseling | |
| Pomfret Senior Center | |
| Senior Recreation and Events | |
| Reverse Trick or Treat | |
| Total lives touched fiscal year 2019-2020 | 67,462 |
| Unduplicated Individuals | 2311 |
| Unduplicated Families | 922 |



Dear Anne and TEEG Community

It is nearly impossible looking back over the past year to overemphasize what a remarkable year it has been. In 12 short months, we all have shifted from a life of unfettered human interaction to one of a pandemic world adjusting to social distancing and safety protocols to keep our loved ones safe.

Throughout this time, each of us has had to cope and deal with new realities in ways that are right for our own families and situations. TEEG rose to meet new challenges thanks to our dedicated staff, strong board, tireless volunteers, and an outpouring of support from so many individuals, businesses, and organizations.

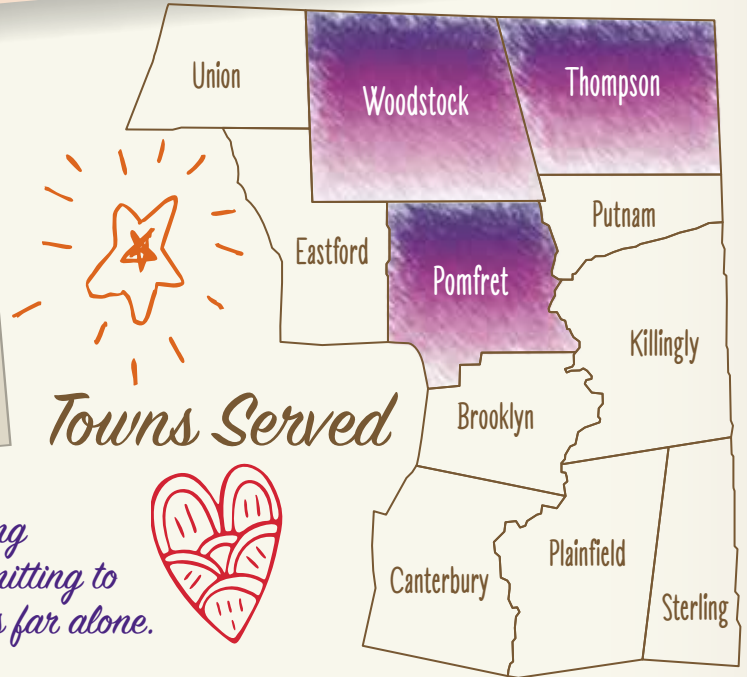
Your 2020 Annual Report, *Testing Our Strength*, a time capsule of the past year, is a testament to finding resilience in adversity, flexibility in uncertainty, and courage in despair. We can't predict just how and when we will be able to return to our usual modes of social interaction, but we know that whatever comes our way, that TEEG will be there, and we will continue to rise to the occasion.

Yours in Community,

Rene Comtois, President, TEEG Board of Directors



Rene is not just an amazing chair of our board, he also helps out wherever he can, like in our pantry.



Towns Served



"Don't let the sun go down without saying thank you to someone, and without admitting to yourself that absolutely no one gets this far alone."

Stephen King

TEEG Board of Directors

Rene Comtois, President
 Heather O'Rourke, Vice President
 Jayne Robbins, Secretary
 Christopher Burke, Esquire, Treasurer
 Mercedes Robbins, Asst. Treasurer

Amy Archambault
 Denise Baum
 Dr. Mary Cheyne
 Larry Consiglio, Jr
 Polly Dean
 Sara Dziedzic
 Mary Anne Fontaine

Eric Gould
 Sandra Gould
 Erica Groh
 Mary Ellen Jones
 Pam Olson
 Linda Peiczarka
 Barbara Pickett

Ted Reynolds
 Anne Richards
 Leah Schad
 Kevin Shaw
 Taff Tschamler
 Dolores Werge

Fall 2019

Mentoring – I believe that some of the very best work we do is through our mentoring program. TEEG serves youth and their families in a variety of ways in a prescribed time frame. Using goal setting, TEEG works to connect youth to their community and strengthen the tools they have, to seek resilience and achieve their highest level of success.

ANYA Masquerade Ball – Before we were all mandated to wear a mask, we thought it might be fun to have a fundraiser that required them. ANYA offered their help and we were soon partnering with them to throw a party that provided support to our agency and awareness to our community.

Eversource Volunteers – People often ask me how I run an agency on a dime and keep up the building at the same time? Volunteers! TEEG's budget does not allow for painting and our staff is busy serving our guests. We had many areas that needed a fresh coat of paint and Eversource had a crew to help. They painted four rooms in one very productive day.

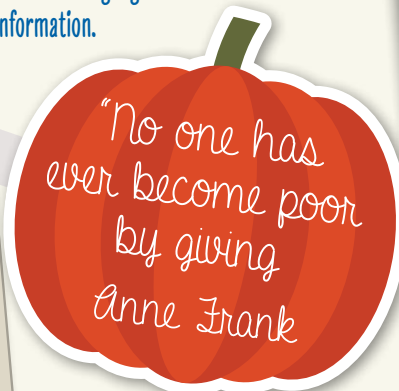
Reverse Trick or Treat – Each year, TEEG looks for ways to deliver information about our services to those who might need them. One way is by using youth volunteers to visit local congregations to deliver Halloween treats and important information.



Masking up at the Masquerade Ball. Oh what fun we had wearing masks at this special event.



It looked so good around here after Eversource volunteers gave the office a fresh new coat of paint.



The 2019 Holiday Season

Food Drives – Thanksgiving means our local and State Police organize and staff food drives at local grocery stores. In all kinds of weather, they collect needed donations to help us feed families and stock the shelves of area food pantries during the holidays. I love this traditional program and the opportunity to connect through these generous volunteers.

Turkey Trot – The Thompson Turkey Trot was a great success again this year. Area residents gather to walk and run to support the Thompson Trails committee and TEEG. It is a collective effort that has become a treasured holiday tradition.

Take Note – How better to share joy than by raising your voice in song? Maybe by adding the opportunity to help your neighbors at the same time? I love A capella music and am grateful for the support that "Take Note" and the Woodstock Congregational Church provided for TEEG's programs.



Once again state and local police volunteered their time to collect Thanksgiving food for area residents.



It's always fun and hectic getting ready for our Thanksgiving distribution.



NOTE TO SELF

Always remember timing is everything

I can never forget that in February, we hosted our 20th Annual Have a Heart Charity Auction at the Thompson Speedway Restaurant. More than 270 people turned out to bid on over 190 lots. It was our most successful event ever, and the last in-person gathering before the pandemic lockdown.

It drives home how lucky we are, how time was on our side, and how tremendously grateful we are for the level of community support that we have received year-over-year. As I look ahead, I know Have a Heart in February 2021 will be different for two reasons. First, because it is always so well attended, we cannot ensure safe distancing for attendees and event staff. Secondly, we know the health crisis has impacted many businesses that have supported us so generously throughout the years.

I know the wonderful TEEG board members are hard at work on alternative formats that capture the same Have a Heart spirit of community and giving. I'll have to keep reminding everyone to follow our Facebook page for updates and announcements. In the meantime, TEEG will continue budgeting carefully to offset lost income while working to support our dedicated local businesses.



We had a great crew that made calls to our clients as the shutdown began. What a difference they made.



Jenni and I love gardening so we jumped right in to help harvest the last of the fresh herbs from our raised beds.

"When one door of happiness closes, another opens; but often we look so long at the closed door that we do not see the one which has been opened for us." - Helen Keller

The TEEG Mission

- Empowering individuals to live independently
- Strengthening families to live respectfully
- Engaging the community to work collaboratively
- Connecting resources to promote a better future for all

To achieve our mission with limited resources, we have learned to use tools that money can't buy.

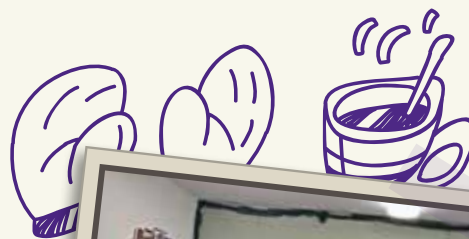
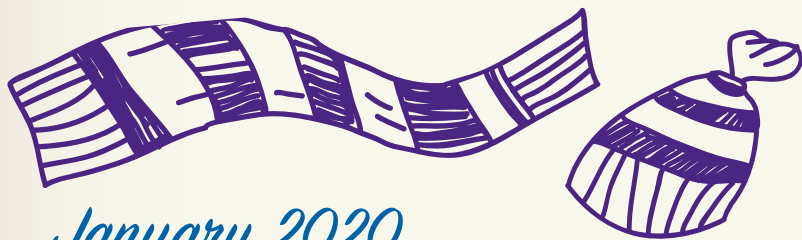
- A listening ear to hear what people truly need
- A compassionate heart to achieve an understanding of life's challenges and obstacles
- A detective's passion to track down resources and find solutions



Thanks to our friends at Unicorr for hosting a food drive and matching dollar for pound.



On the road again! We love participating in community events.



January 2020

Cold Weather Shelter – I love it when entities work together for the greater good. Homelessness in the northeast corner of Connecticut is a hidden problem that affects too many of our local residents. When the overflow numbers in the local ACCESS Shelter are reached, there are no alternatives for some. The ACCESS Agency asked for partners who were willing to team up to find solutions. Together with local towns, Interfaith Human Services of Putnam, Interfaith Human Services Council of Killingly and Brooklyn, the Episcopal Diocese of Norwich, and many others, we were able to open the Northeast Cold Weather Shelter in January providing 74 nights of service.

Holiday donations – The outpouring of love and support that our community provides during the holiday season is both miraculous and inspiring to me. The calls begin in October with “what do you need?” and “how can I help?” Providing a family with an assist at the holidays allows them to celebrate together, while sticking to their budget. Families receive a requested gift for their child and choose other items from our “holiday shop.” Wrapping paper and all the trimmings round out the event, keeping families together and supported through the season.

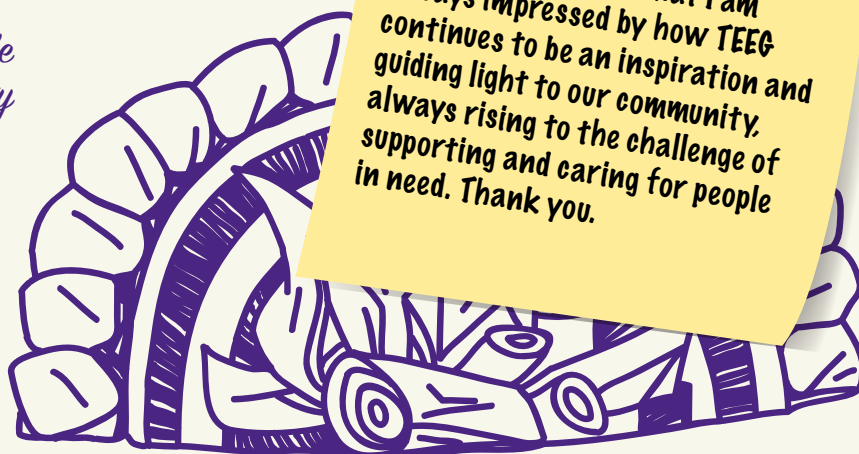
Mill Town Grille – Small businesses are the heartbeat of TEEG. When Dan Rainey, owner of Mill Town Grille in North Grosvenordale, wanted to help us out he set up a fundraiser that would give 10% of his sales two days each month in 2020. Although he was affected by the unexpected toll of the Covid shutdown, he called us in June to have us come down and collect what he had gathered. How could TEEG ask for a better friend?

PIT Count – Each year, on a cold night in January, the homeless are counted across our state. These counts are important for funding and for services. Volunteers ensure that a week long youth count is held in our local schools. They then accompany us at night as we seek out those who are sleeping outside.

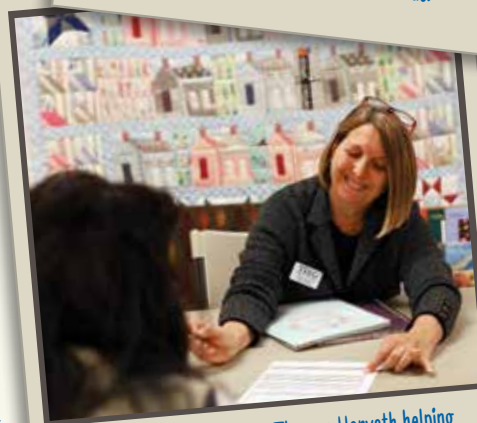
Bonfire – I am grateful that the Thompson Recreation Commission does not let winter stop their fun. They light a fire and celebrate the cold. While doing so, they warm the homes of others by collecting donations to the Thompson Fuel Fund.

“I am of the opinion that my life belongs to the whole community and as long as I live, it is my privilege to do for it whatever I can. I want to be thoroughly used up when I die, for the harder I work the more I live.”

– George Bernard Shaw



I remember when Weichert Realtors-Browning and Browning brought us Christmas.



Client Care Coordinator Therese Horvath helping find solutions with a smile.



From the Desk of
LARRY CONSIGLIO

Hi Anne -
Just wanted to say that I am always impressed by how TEEG continues to be an inspiration and guiding light to our community, always rising to the challenge of supporting and caring for people in need. Thank you.

SHARING

CARING

LOVING

TEEG Administrative and Program Staff

Anne Miller, Executive Director
 Ashley Fournier, Family Programs Coordinator
 Cameron Saracina, Youth Programs Assistant
 Catherine Smith, Program Assistant
 Chelsea French, Community Development Coordinator
 Cindy Miller, Front Desk Coordinator
 Haylee Olson, Associate Youth Programs Manager, JRB Coordinator
 Jason Bleau, Food Systems Coordinator
 Jenni Fountain, Fiscal Administrator
 Jill Bourbeau, Youth Programs Manager
 Jim Jutras, Senior Center
 Jo-Ann Chenail, Resource Developer
 Jim Jutras, Senior Center
 Susan Kershaw-Sczuroski, Clinical Supervisor
 Therese Horvath, Client Care Manager

YOUTH MENTORS

Ashley Fournier
 Cameron Saracina
 Christine Chatelle
 Christina Vogt
 Courtney Normandie
 Haylee Olson
 Jennie Breton
 Joe Carvalho
 John O'Brien

Kathleen Mulford
 Loryn Walker
 Mackenzie Racine
 Patti-Sue Brown
 Robert Chenail
 Rose Palazzo
 Gagnon
 Shelby Archer

ASAP STAFF

Cameron Saracina
 Hanna Russo
 Haylee Olson
 Jeff Lee
 Jennie Breton
 Victoria Lacafta



Our staff and administration is AWESOME!!!



Hi Anne -
 I found this great quote from Eckhart Tolle:
 "When you smile at a stranger you become the giver."

Made me think about how the masks we now have to wear can sometimes hide our identity. But we have to keep on smiling!
 Kevin Shaw



TEEG at Work in the Community *Always Embracing a Flexible Mindset*

The staff and volunteers of TEEG are known for their dedication, always striving to provide a hand up.

A pantry distribution is a quick fix, but they know that combining a bag of groceries with programming and information to create and sustain a food budget provides empowerment as well as nourishment.

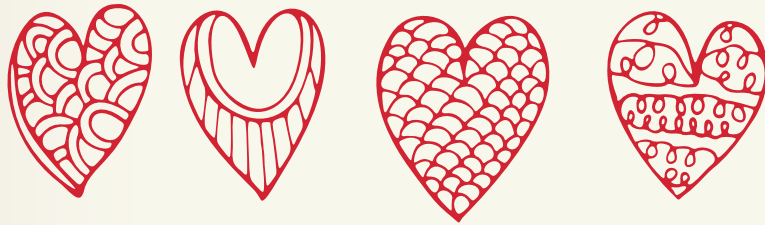
When the pandemic required them to shift to remote support and pre-packaged pantry boxes in March, they challenged themselves to find ways to provide food services while being true to our mission.

Also, more people need their services but did not know how to find them. They had to reach beyond themselves by being open to change.

The dedicated staff at TEEG went above and beyond to devise creative and workable solutions, such as their new approach to their food pantry.

Some of their work was performed from home. Some of it required being out in public in all types of weather.

Through it all, the TEEG staff embraced every challenge without complaint while honoring their mission of empowerment and respect for those who need TEEG services.



February 2020

Have a Heart – Why give unless you give with your heart? TEEG's auction is our signature event, and though it will not happen in 2021, we certainly plan to hold it in the future. Friends of TEEG, local businesses and individuals sponsor or donate goods and services in order to help us put together a night of fun and fellowship. The result? An entire room full of people who come to bid high and bid often to show their support for all we do.

TEEG Ambassadors – Our Have a Heart auction is a great fundraiser and one TEEG counts on yearly to fill the gaps not covered by grants and donations. TEEG Ambassadors go beyond the charitable spirit of the evening and bid on the chance to proudly own the title of “TEEG Ambassador.” They stand as an example of what it means to give and to support our neighbors.



March 2020

Front Steps Project – I love support that uses your talents. Jamie and Stephanie McSweeney heard of a movement that would record the historic moment of the pandemic shutdown while raising money for their neighbors. Jamie, a professional photographer, traveled the northeast corner, photographing people on their front steps. Those people were invited to give to TEEG and other local nonprofits to “pay” for his service. Stephanie did her part by advertising and coordinating the project.

Lunch site connections and mobile food pantry – How do you reach people when they are isolating in their homes? Feed them! We needed to get the word out that TEEG could help people through the pandemic, and we had lots of help doing so. The Hale Foundation reached out and, through them, we were able to partner with the Vanilla Bean and Grill 37 in Pomfret and Woodstock to bring meals and information to families using the school feeding sites. We were fortunate to have Anya, Thompson House of Pizza and G-7 Catering offer to help in Thompson and Putnam as well.

Senior check-ins – While all of us have been challenged by the need to stay isolated, area seniors have not been able to return to daily life as soon as the rest of us. TEEG staff has been calling and checking in regularly to assure that they have what they need and that they know they have someone to reach out to when they need something or just need to hear a familiar voice.

Parking lot pickup – I have always been proud of our “client choice” model. TEEG likes offering people the opportunity to choose the foods that they like to eat. However, when our small pantry could not safely serve guests inside, our staff set about providing the best outside service possible. As the weather warmed, we added a fresh produce cart, choice menus for some items and a rolling cart with some of the welcome extras (like toiletries) that sometimes come our way.



The McSweeney family posed for their own front step photo. How thoughtful!



This is the amazing scene of what it looked like when we were all ready for our first parking lot distribution.

I received this letter from a local woman who asked us to share her story. Asking for help is not easy. Many of us have never had to experience walking through our doors in need, and if we did, we would likely not share it. I applaud her bravery and thank her for sharing.

(NOTE: We have changed a few details to protect her privacy, but the words are her own)

As a usually strong, independent woman, it was difficult for me to admit that I needed help. Almost more help than I thought was possible to receive. When I came upon hard times, I did not know where to turn.

It was not just one area of my life that had turned upside down; it was most of it.

I was diagnosed with breast cancer and had just stopped treatments after two surgeries. Still tired, both physically and emotionally, my family found itself again in the middle of another medical crisis.

My daughter was ill and needed to be cared for in a facility to help her overcome an addiction. She needed me to care for her two young children while she tried to get well. My grandchildren became my priority.

While trying to navigate the waters of raising young children as a 50-year-old woman, COVID19 struck. Suddenly, the schools were closed. My job as Academic Interventionist was furloughed. And because the position was funded through a Title I grant, I was ineligible for unemployment. I didn't know where to turn.

I was told by one agency that I "should have planned better as I knew I wouldn't work in the summer." But that was not true. I had worked every summer for the past 20 years. This situation was different, but no one was listening.

Then I called the town hall. I was desperate. I was not as healthy as I would have liked, I was afraid I could lose my daughter, and I was now raising two young children during a pandemic. I had no income and very little savings that were being depleted at record speed. The Town Clerk's office suggested that I call TEEG.

I connected with a case manager who began to check in with me regularly. I felt like I had a lifeline. I was offered help with food through the food pantry. I was given encouragement and guidance. Most importantly, I was given time to have some meaningful conversations with her that provided me with hope, which, like my savings, was running out.

My case manager then put me in touch with a counselor, who became a person that I looked forward to talking with and who helped me sort out various problems. She offered advice and a kind ear, both of which I needed. With her support, I made great strides in getting my daughter back home with me. I finally felt strong enough to try to help her myself and to start rebuilding our family unit. It will take work, but my grandchildren now have their mother back.

My life is still unsettled. It will take me a long time to bounce back from situations that were spiraling out of my control. I still need TEEG to be able to put healthy meals on the table for my daughter and grandchildren. I still need TEEG to help me with backpacks and supplies for the children as well. I still need TEEG for various other services they provide. I still need to talk to my case manager and counselor as they became angels in my life, and their support helps me through days that are still a little too much for me to navigate alone.

TEEG saved me from potentially losing so much. This organization touched my life in many ways I am not sure I can ever repay. TEEG is an organization that is second to none, and I am forever grateful for the help I receive from them.



Just one of the many masks Karyn stitched.



Our friends at the Hale YMCA running a food drive to help fill our pantry. Who better to "run" a food drive!



Volunteers dividing up the first of the milk distribution. We sent milk to 13 different agencies and schools that day.

April 2020

YMCA food drive/UNICORR – Many local groups looked to how they could help during the shutdown and they came up with creative solutions to assist others. Both UNICORR and the folks at the HALE YMCA set up drives that collected thousands of pounds of help!

Longmeadow Mask Project – Sometimes I wonder “What can one little person do?” Just ask Karyn Dibonaventura! Shut-in during March, April, and May, she started sewing, putting many miles on her machine. She stitched up masks and displayed them at her business, asking for a donation of money or food. Soon she had contributed over \$4,000 dollars for TEEG and Daily Bread and, as of this writing, she is still stitching!



May 2020

Creation Church volunteers – TEEG has so many dedicated volunteers that assist us in our work. The folks at Creation Church are just one example. Their members are constants at TEEG, always there, always willing, and always cheerful. They have painted our pantry, stocked our shelves, worked pantry distributions in all kinds of weather and served as our delivery service for those who could not safely venture out during the shutdown.

Milk distribution to locations throughout northeast CT – Jon Hermonot is a local dairyman with a passion for helping others. As the pandemic progressed, he knew that surplus milk needed a place to go. He helped arrange a drop of 18,000 gallons in April and another 15,000 in June. All of it went to local food banks, community meal sites and schools. It was a group effort that included fundraising, volunteer coordination and some fast work to make it a reality.

June 2020

CSA Garden at TEEG connected to the Thompson Garden by the River at the OLD TEEG building – I love a beautiful garden. This year brought two new gardens to the town of Thompson. At our old building, on Main Street, the Town Planner established a beautiful, raised bed garden that will someday include a food orchard and outdoor and gathering area for local residents to enjoy. This year, the garden provided generous amounts of food for our pantry.

At TEEG, with the help of the Wireless Zone Foundation for Giving, we updated and improved our garden space to establish a “Community CSA Garden”. Here, we worked with garden member volunteers to learn, plant, grow and harvest together!

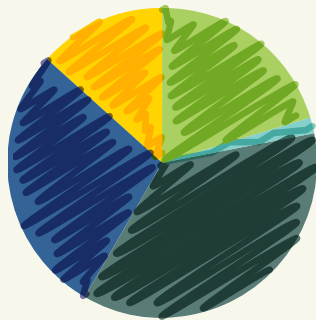


Local neighbors helped by harvesting fresh lettuce for our pantry.

Maintaining a Strength in Our Balance Sheet

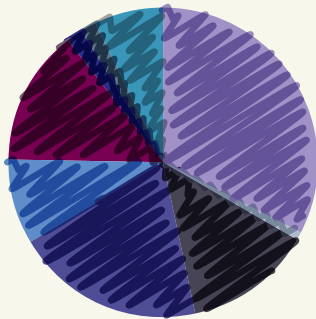
When people donate to a non-profit organization, in any amount, it is an affirmation of trust. TEEG is committed to honoring all your trust by always doing what is right and best in serving our neighbors.

Sustained giving by patrons, foundation support, municipal partnerships, and grantors, all work together to ensure that we remain fiscally healthy and ready to serve. I always tell people to remember, with TEEG, every dollar stays right here in northeast Connecticut to support our programs and lend a hand to our neighbors.



EXPENSES

| | |
|---|------------------|
| ■ Early Childhood | \$152,447 |
| ■ Community Support & Education | \$12,970 |
| ■ Youth Services | \$272,107 |
| ■ Community Services | \$211,892 |
| ■ Senior Outreach | \$98,050 |
| Total expenses | \$747,466 |



REVENUE

| | |
|---|------------------|
| ■ Foundations, Individuals, Schools, Scouts & Service clubs | \$300,775 |
| ■ Faith Based Partners | \$9,195 |
| ■ Business & Fundraising | \$122,255 |
| ■ Earned Revenue | \$183,025 |
| ■ Municipal | \$82,208 |
| ■ State | \$130,872 |
| ■ Federal | \$15,572 |
| ■ Client Relief | \$14,656 |
| ■ Payroll Protection Plan Loan | \$65,555 |
| Total revenue | \$924,113 |

Funders

| | |
|--|---------------------|
| Glass Foundation | Early Childhood |
| McNeely Foundation | General Support |
| Newell D. Hale Foundation | General Support |
| Vincent Family Charitable Foundation | General Support |
| Pfizer Foundation | Matching Gift |
| bankHometown Foundation | Food Security |
| Beagary Charitable Trust | Food Security |
| Farm Credit East Cares | Food Security |
| Centreville Savings Bank Charitable Fund | General Support |
| The Mitchell D. Phaiah Foundation | General Support |
| Wireless Zone Foundation for Giving | Garden |
| Governor Ned Lamont | General Support |
| WM Casper Graustein Foundation | Food Security |
| Eastern CT. Association of Realtors | Housing Stability |
| Wal-Mart Foundation | Matching Gift |
| Enel Green Power North America Donor Advised Funds | General Support |
| Putnam Bank Foundation | Youth Services |
| NE Women and Girls Fund | Youth Services |
| New Alliance Foundation | Youth Services |
| The Community Foundation of Eastern CT Inc. | General Support |
| The Hanover Insurance Group Fund | Matching Gift |
| Nordson Corporation Foundation | Mentoring |
| Osterman Family Foundation | Mentoring |
| Governor's Partnership to Protect, dba the Governor's Prevention Partnership | Youth Services |
| Area Agency on Aging Eastern CT Area- Senior Resources | Benefits Counseling |
| The Scripps Family Fund for Education | General Support |

Dedicated Town Funds

| | |
|---------------------|--|
| Woodstock Fuel Fund | Fuel Assistance for Woodstock Residents |
| Thompson Fuel Fund | Fuel Assistance for Thompson Residents |
| Pomstock | General Assistance for Pomfret and Woodstock Residents |

HOW TO GIVE TO TEEG

Step 1. Get to Know Us

Study this guide carefully, follow us on Facebook, explore our website at www.teegonline.org, or visit to tour our building.

Step 2. Join Us

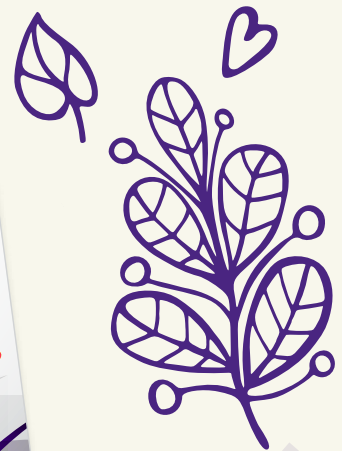
- Attend our annual Have a Heart Auction
- Join us at a "pop-up" event (a community-sponsored happening that benefits TEEG)
- Thompson Lion's Club Walk for Shoes
- Pomfret School Radio Hour
- Thompson Recreation Turkey Trot
- Putnam Lion's Trivia
- Pomfret Agriculture Commission Farm to Table

Step 3. Contribute to TEEG

A monetary donation in any amount places your trust in our ability to best use those funds to help our neighbors. Your donation stays here and serves our local community.

"Don't just learn, experience.
Don't just read, absorb.
Don't just change, transform.
Don't just relate, advocate.
Don't just promise, prove.
Don't just criticize, encourage.
Don't just think, ponder.
Don't just take, give.
Don't just see, feel.
Don't just dream, do.
Don't just hear, listen.
Don't just talk, act.
Don't just tell, show.
Don't just exist, live."

- Roy T. Bennett, *The Light in the Heart*



Monthly mobile pantry distribution in Woodstock and Putnam provided residents with food, information and outreach.



Our amazing Youth Program Pop-ups kept families connected and youth engaged.

SHARING

CARING

LOVING

REACHING

SERVING

GIVING

Our Dedicated Donors

The work we love to do depends on the generosity of the community. Every year, people reach out with generous financial support, food, and material donations and to volunteer their time.

When the pandemic struck, we were overwhelmed by the support we received. While we cannot see the road ahead, we do know that many of the people and business owners who have been there for us are struggling. We also know that the gatherings that provide us with so much community support may not be possible for some time to come. We are hopeful that we will continue to receive your support, and at the same time, we are determined to keep helping all who need our services.

We are grateful to the following donors and volunteers for contributing to and supporting our work over the past year. The following lists recognize donors who have made financial contributions to TEEG apart from purchases made at our Have a Heart auction. (NOTE: While we much appreciate the generosity of the community at our annual fundraising event, the purchase of goods and services is not recognized by general accounting practices as a donation.)

We have made every attempt to recognize everyone while respecting the anonymity of those who have asked, and sincerely hope we have not left anyone out. Cash donations received between 7/1/2019 and 6/30/2020

TEEG Platinum Angels – \$5,000 or more

Area Agency on Aging Eastern CT
Area- Senior Resources
Beagary Charitable Trust
CT Youth Services Association
DCF Prevention Family Support
Group
DSS
Enel Green Power North America
Donor Advised Funds
Governor Ned Lamont
Integral Health Services Inc.
Rebecca & Cyrus Harvey Fund
Spirol International
The Community Foundation of
Eastern CT, Inc.
The Mitchell D. Phaiah
Foundation, Inc
The Nordson Corporation
Foundation
The Osterman Family Foundation
The Scripps Family Foundation for
Education
Town of Thompson Board of Ed
Vincent Family Charitable FDN
WmCasper Graustein Foundation
YSB - DCF

Private

Frank & Shannon Demarest
Betty Hale
Steve & Kathleen Herbert
Col. Joel & Capt. Kathleen Hiatt
Christine Lessard

TEEG Platinum Angels – \$1,000 - \$4,999

ANYA LLC
Archambault Insurance Associates
bankHometown Foundation
Berkshire Hathaway
Brooklyn Correctional Institution
Centerville Savings Bank
Charitable Foundation
Chaput Electric
Christ Church of Pomfret
Danielson Surplus Sales Inc.

Daughters of the Holy Spirit
DeLaval
E. Woodstock Congregational
Church
Farm Credit East Cares
First Congregational Church of
Woodstock
Gerardi Insurance
Governor's Partnership to Protect,
dba The Governor's Prevention
Partnership
Jewett City Savings Bank
Killingly Parks & Recreation
Linemaster Switch Corporation
Longmeadow Automotive
NE Area Women & Girls Fund
Network For Good
NewAlliance Foundation, Inc.
NUMA
OJJDP
Pomfret School
Putnam Rotary Club
South Woodstock Baptist Church
The American Gift Fund- The
Jones Family Charitable Fund.
The Trinity Construction Group LLC.
The Wireless Zone Foundation
for Giving
The Wireless Zone Killingly
Commons
Thompson Lions Club
Thompson Recreation Dept.
Thompson Tractor, LLC
Town of Woodstock Recreation
Dept
UNICORR/Nutmeg Container
United Natural Foods, Inc.
Vistra Energy
Weiss, Hale & Zahansky Strategic
Wealth Advisors
Woodstock Academy
Woodstock Building Associates, LLC

Private

Joseph & Dawn Adiletta
Denise B. Archambault
Tom & Amy Archambault & Family

Raymond & Jane Austin
Christopher & Patricia Burke
Ramon & Elizabeth Canning
Ed & Mary Lou Desaulnier
John & Lauren Dignam
Karen Durlach
Richard & Kerstin Forrester
Donna Grant
Kevin & Sonia Greene
George & Sandra Groom
Tom Horn & Sue Sciaraffa
Bruce & Donna Kosa
Kevin Lewis
Samuel & Pamela Lomerson
Jorge Martinez
Aaron, Nicole & Benjamin McGarry
Sylvia Miller
Jenny Mills
John Timothy Oliver &
Edward M. Dempsey
Richard Paul & Dr. Sherry Kroll
Jeffrey & Lindsay Paul
Paul & Louise Proffer
Tim & Anne Richards
Stephen & Jen Ritzau
Mercedes Robbins
Nate & Ann Rosebrooks
Sebastian & Barbara Scripps
Bruce & Nancy Shay
Thomas & Sandra Swale
Taff Tschamler & Wendy Bradley
Bryan Walsh
Glenn Warner & Marguerite Davis
Robert & Dolores Werge
Jason & Michele Woz
Kristen Xeller

TEEG Gold Angels – \$500 - \$999

American Legion Inc
American Truck Historical Society
Cargill Chevrolet Co Inc
Chase Graphics Inc.
Christian Family Construction
Svc's LLC
Connecticut State Police Troop D

Ct. State Assn of Emblem Clubs
Deary's Gymnastics Supply
Eastern Ct Assoc of Realtors, Inc.
Eversource Energy Service Co
Fairholm Farm , INC.
Joseph Botta MD & Associates
Killingly-Brooklyn Rotary Trust
M. Provost Trucking & Landscape
Products
McNeely Foundation, Inc.
NAFI Connecticut Inc.
P3 Technologies
Pomfret School
Putnam Bank a Division of
Centerville Savings Bank
RE/MAX Bell Park Realty
Solair Recreation
Sunrun Gardens
The Center for Bone & Joint Care
The Hanover Insurance Group
Foundation, Inc
The Pomfret Proprietors
Association
The Putnam Bank Foundation
Tourtellotte Memorial High
School
Windham County Farm Bureau,
Inc.

Private

Nancy Adams
Tracy Asikainen
Dean & Lisa Audet
Michael & Denise Baum
Harold & Colleen Bishop
Dennis & Janet Blanchette
Denise Burns
Douglas & Michelle Couture
Dr. Garfield & Sylvia Danenhower, III
Joan Dash
Kenneth Ebbitt
David & Phyllis Emigh
Keith & Paula Enderle
Jerome & Diane Ethier
Wanda Fontaine
Jeffery Gordon & Lisa Canter
Lawrence & Erica Groh

Neri & Marge Holzer
 Adam & Dawn Keser
 Edward Koistinen & Diane Jamieson
 Tom Laskey
 Suzanne Lavoie
 Roland Lupien
 Patrick & Gail McCarthy
 Eric Fogg & Anne Miller
 Peter & Donna Nalewajk
 Peter & Kelly Newth
 David & Linda Peiczarka
 Barbara Pickett
 Gary Powell & Laura Graves
 Charles Puffer
 Bernard & Jean Rocheleau
 Charles Rosenfield
 Dan & Judy Rovero
 Steven Roy
 David & Judith Rzucidlo
 Jonathan & Sally Scott
 Kevin & Linda Shaw
 Rebecca Staveski
 Cheryl Swenson
 Mark Thomas
 Steven & Mary Tomeo
 Steven Voorhees
 Elmer Wheeler & Deborah Russell
 Ewart John & Kathryn White
 Brian Whright

TEEG Silver Angels - \$200 - \$499

Amplisound
 Barbara Lussier Design
 BCS Company
 Body by Design
 C.R.F., INC.
 Common Sense Payroll, LLC
 Connecticut Water
 CR Premier Properties, LLC
 Creation Church
 DATCO, Inc
 Daughters of Isabella Circle 543
 Demers Enterprises LLC
 Emanuel Lutheran Church
 Gregory M. Gazzola, DMD LLC
 Hometown Heating, LLC
 Living Faith United Methodist Church
 Organize me Clean
 Our Father's Table
 Paige Estates LLC
 Pomfret Community School
 Putnam Interact Group
 Quaddock Camping Area, Inc.
 Rawson Manufacturing
 RPC Associates, LLC
 Saints Constatine & Helen Greek Orthodox Churches
 TAKE NOTE! INC

Teagan & Ash & Misysguy
 Temple Beth Israel-Preservation Society, Inc
 The Quintal Agency, Inc.
 The Vanilla Bean Café
 Thompson Business Association
 Thompson Gamblers Anonymous
 Titan Energy New England
 TVI, INC. DBA Value Village/Savers
 VFW Ladies Aux of Thompson
 Wal Mart #1980- Putnam
 Wal-Mart Foundation
 WEBCO
 Wilson Language Training Corp.
 Woman's Board Day Kimball Hospital
 X-Fire Paintball

Private

Feta & Nancy Abdullofski
 Gary & Anne Alves
 Marc & Mary Archambault
 Matt Baum
 Donald & Anne Bennett
 Victoria Bocash
 Bill & Cecilia Bray
 Warren & Marianne Campbell
 Beverly Champany
 Rene & Lynne Comtois
 Laurence & Cynthia Consiglio
 Joe & Audrey Courtney
 Bob & Cheryl Darling
 Polly Dean
 James & Lisa Dodd
 John & Johnetta Downs
 Peter Flaherty
 Bernard Fournier
 Mr. Freedman
 Rene & Joanne Gatineau
 Thomas & Ashley Goyette
 John Grzesiak
 Duncan & Kathleen Hamilton
 John & Theresa Hart
 Allen & Susan Horn
 Thayne & Angela Hutchins
 Harold & Anne Keller
 Dennis & Kathie Kelly
 Kathleen Knight
 Hans & Christina Koehl
 Nick Longo
 Peter & Virginia Lusa
 Bruce & Alexandria Lyman
 John & Jean McClellan
 Johanna McDermott
 Rene Morin & Lynne Bergeron
 Anna Murphy
 John Normington
 Carol Norris

Jim Northridge
 David & Pam Olson
 Anne Ouillette
 Robert Paladino
 Edward Peltier
 Andrew & Susan Peterson
 Michael Petrella
 Elizabeth Pierce-Fortin
 David & Karen Poplawski
 Cosmo & Bernadette Quercia
 Dan Rainey
 James W. & Donna M. Rawson
 Rene Marion
 Mark & Kathy Rocha
 Dan Roy, Sr.
 Cassandra Ryan
 Donna Shaw
 Edwin & Alice Sheldon
 Tom & Lynn Singleton
 David & Catherine Smith
 Paul & Judy Smith
 Roger Solomon & Susan Foster
 Patricia Spooner
 Jill St. Cyr
 Nora Steinhauer
 Nicole Swenson
 Paul & Veronica Vaida
 Kent & Mary Weaver
 Henry Woodbridge, Jr.
 Sarah Yale
 James & Melissa Zahansky

TEEG Angels - \$150 - \$199

Planet Aid Inc.
 Town of Killingly Office of Town Manager
 Angell House Design
 Seth Morse IBA, LLC

Private

Thomas & Natalie Beauchamp
 Stephen A. Bibek
 Melissa Bonsall Meyers
 Thomas A. & Kathy Borner
 Jay Cantor
 Bob & Jo-Ann Chenail
 Craig & Mary Cheyne
 Donna Copeland
 Marie DeJesus
 Julie Drouin
 Jennifer Duggan
 Wayne & Dorothy Durst
 Elizabeth Fontaine
 Ann Korswig
 Dorothy Kuszewski
 Stephen & Kathleen Lewis
 Frank & Linda Neuman
 Merrill & Jayne Robbins
 John & Erin Schnare
 Charles Sczuroski & Susan Kershaw-Sczuroski
 Joseph & Renee Waldron



Thanks to our friends at Grill 37 for hosting a mask tree and Kim Powell for joining Karyn in making masks.



A happy recipient of our drive-thru ice cream event.



Hi Anne -
 2020 is the year of change. Our way of doing business has changed beyond our wildest imaginations. TEEG has rocked 2020 - not 2020 rocking TEEG. Under your direction, our staff has adapted to the new normal and thrived, not just survived! As a member of TEEG's Board of Directors I am deeply honored to be part of this organization.
 Mary Anne Fontaine

SHARING

CARING

LOVING

REACHING

SERVING

GIVING

**TEEG Friends –
\$100 - \$149**

Advanced Back & Wellness Center
American Rent-All, LLC
Business Systems & Incentives Inc.
Fabyan Farm
Fire & Iron Station 159
Gates Buick GMC Nissan
Hibbard Hill Farm
Jamie Aubin Photography
Johnston & Associates Real Estate, LLC
Kelly's Tire
Killingly Building Products
Lajeunesse Unlimited
Loomis Real Estate LLC
Operation Fuel
Putnam Vision Center
ROMEOS
Savage Systems
Shear Perfection
Sprucedale Gardens Nursery & Greenhouse
Stephen Adams, Attorney At Law
The Loomis Team LLC
Thompson Public Library
Tyrone Farm
Weichert Realtors - Browning & Browning
Windham County Sheet Metal, Inc.

Private

Daniel & Mary Atwood
Robert & Lynn Auger
Dave & Peg Babbitt
Paul Basinet
William & Debra Berube
Andre & Donna Bessette
David & Lynn Bourque
Kay Bousquet
Yvette Brissette
Lois Bruinooge
Julia Budd
Barry & Barbi Burdick
Thomas & Terri Caffelle
George & Debra Carabina
Rita Carabina
John & Debra Castonguay
Marc & Kate Cerrone
Diane Chapin
Edward & Linda Charlton
Sarah Cheng
Dennis & Mary Chretien
Eleanor Clark
Daniel & Paula Coughlin
Walter & Denise Crabtree
Lynn Davis
Andrea Delaney & Family
Leo & Shirley Demers
Ronald Desaulnier
Rebecca Eddy
Brian & Marlys Elliott
Donald & Ruth Everburg

Matthew & Joanne Fagan
Marissa Farbo
Paul & Carla Faucher
Judith Favreau
Jennifer Fielding
John C. Folsom
Roger & Nancy Gale
Lisa Gatzke
Peter Gifford
James & Linda Goodwin
Debra Granger
William Green
Judy Haines
Joy Harmon
Carolyn Hart
Edwin Higgins III
Leslie Holland
Susan Imschweller
Linda Johnson & Edward Rose, Jr.
David Johnson
Jason & Ellen Jones
Jordan Keefe
Mary Eliza Kimball
John & Kathleen Koller
Carol Kudzal
Helene Labelle
John & Judi Lachance
Richard Langlois
Cliff Larose
Robert & Teresa Laurens
Paul & Leslie Lavallee
Marsha Lavoie
Signe Lucas
Amy Lusa
Edward & Barbara Luther
David & Karen Marshall
Matthew & Margarethe Mashikian
Dorothy L Maynard
Deirdre McCarthy
Walter & Carolyn McGinn
Tim McNally
Anna Mendenhall
Todd & Katrina Milanese
Edward & Karen Munroe
Kim & Patricia Neely
David Nesanelis
Rex & Theresa Nichols
Paul & Melissa Notis
Timothy & Denise Oles
Sydney Padula
Donald & Cheryl Pepek
Christine Pilipatis
Kadie Proulx
Kim Provencher
Jim & Rita Raftery
Danielle Robbins
Karen Robbins
Eric Rosen
Vincent & Carol Rossetti
Karl & Betsy Salo
Loren Salvietti
Daniel Santos
Mark & Christine Schwartz

Earl Semmelrock & Sarah Heminway
Paul & Linda Smalarz
Gary & Debra Spinelli
Leonard & Nancy Spooner
Anne St. Onge
Jason & Amy St. Onge
Suzanne St. Onge
Myron & Nancy Stachiw
Joan Swearer
Lisa Tedeschi
Daniel Touchette
Joseph & Linda Valade
Cristine Waldron
James & Nancy Weiss
Robert & Carolyn Werge
Michael & Diane White
Robert & Sandra Woodrow
Richard & Paula Zadora
Jill Zangerl

**TEEG Good Neighbors –
\$50 - \$99**

Adult Children of Alcoholics Support Group
Church of the Good Shepherd Wdstck
First Impression
Foster Corporation
MANTEC LLC
Modern Lumber Co., Inc
N.E. Ct Healthcare Credit Union, Inc.
Parker Memorials & Stone Co.
Pfizer Foundation Matching Gifts Program
Putnam Democratic Town Committee
Scanlon Funeral Service, Inc.
Triple C Cakes
WINY Osbrey Broadcasting Company

Private

Jason Allard
Thomas & Felicia Balcom
Cindy & Joe Bastis
Shelley Bellman
Robert & Karen Blackmer
David & Patricia Blake
Jason Bleau
John & Carol Borowski
Kevin & Sandralee Boucher
Shawn & Tara Brissette
William & Lois Brower
Rachael Budd
Adam & Melissa Caisse
John & Noreen Chapman
John & Suzanne Cimochowksi
Nancy Coolidge
Charles Coombs & Marsha Hilsenrad
Lisa Danburg
Monica Dean
Timothy Deary

Matilda Deotte
Norman & Lynn Deslauriers
Bruce & Lisa Desmaris
Melissa Dragon
Steven Dugan & Noveline Beltram
Debora Durand
Charles & Theresa Ennis
Helen Flood
Brian & Mary Anne Fontaine
Marie Franklin
Debra Gagnon
Paul Grenier
Paul & Clarice Guillot
Bruce & Barbara Hargraves
Bruce Hoag
Judy Hosmer
Shirley Houghton
Daniel & Rita Jezyk
Bruce & Sharon Johnson
Kevin & Margaret Johnston
James Jones
Aino Kardestuncer
Ryan & Amanda Kelly
Michael & Emma King
Elaine Lind
Peter T. Lopriore
Lisa Madden

Brenda Marshall
Andrew & Colleen Massey
Evan & Loretta McHugh
Todd D & Diane Barrette Morin
Keith & Margery Mosher
Montajeane Neil & Maralyn Macgillivray
Christopher Nelson & Celeste Therrien
Maureen Ritchie Nicholson
Henry & Cynthia Obert
Agnes & James Oleksiak
Haylee Olson
David & Renee Ondrasek
Brendan Owens
Charles & V. Henrietta Panu
Irene Papierski
Joseph & Kathleen Ptaszynski
Bob & Sheri Putnam
Sabrina Putnam
Brandi Renaud
Patricia Renaud
Residents of the Town of Thompson
Frederick & Barbara Rich
Donald & Eileen Richmond
Gordon & Rita Rohr
Debra Rubba



Youth Program staff delivering food and activities.



What great partners we have! Our friends at bankHometown donating through their Neighbors Helping Neighbors program.

James & Jeanne Sali
 Tricia Santos
 Mary Screen
 Roger & Joy Sinni
 Caroline Sloat
 Howard Smith
 Lawrence F. Sommer
 Jillian Starinovich
 Nick Stein
 Howard Stillman
 Christine Sullivan

Rosalle Terry
 Sue Tobin
 Robyn Tracy
 Kim Trudeau
 Gladys Tucker
 Michael & Janene Vandt
 Teri Walsh
 Lynn & Donna Weaver
 Tina Weidele-Banks
 A. White
 Debra White

Kristen Willis
 Paula Wilmut
 Vernon & Felicia Wilson
 Audrey Aileen Witkowski
 Richard Woodcock
 Suzanne Woodward

**TEEG Supporter –
 up to \$49**

Amazon
 DEKCO, INC.
 Friendly Spirits Liquor
 Store
 KWP Associates, Inc.
 New Shoreham Human
 Systems Consltg, LLC
 Pitbull Commercial
 Coatings
 Quiet Corner Consulting
 Residents of the Town of
 Woodstock
 Town of Thompson Tax
 Office

Private

Dave & Lisabeth Adamick
 Steve Adams
 Barbara Adamuska
 Debra Barbour
 Beatrice Baron
 Ann & Robert Bastien
 Jo Ann Bauer
 Cindy & Len Bergeron
 Elizabeth Bernard
 Stephen & Jill Bourbeau
 Henry & Estelle Bourgeois
 Ashley Caprera
 John & Kathryn Casey
 Roy & Pat Cheever
 Cynthia Clark &
 Christie Deary
 Michael & Lana Cohen
 John & Judith Converse
 Nancy Coogan
 Taylor Lynn Copeland
 Jill Corey
 Dave & Kristen
 Gordon Davis
 Peter Debiasi
 Caroline Delaney
 Lisa Donovan
 Mark & Kristin Duethorn
 Sara Dziedzic
 Maurice Earle
 Laura-Lee Edwards
 John & Theresa Evans
 James Hamel &
 Lenore Felpel
 Sandy Ferguson
 Anthony & Michelle
 Foronda
 Gary & Jenni Fountain
 Melissa Ganius
 Sharon Gardner
 Frances Gesualdi
 Matthew Goethals

Eric & Sandy Gould
 Ed Griffin
 Ann Gruenberg
 Ashley Hardt
 Tamara Harris
 Lurena Heath
 Kathie Hess
 Maura Higginson
 Martha Horst
 Rosemary Humes
 Joseph & Valentine
 lamartino
 Lee Jacobson
 Robert & Cynthia Jarvis
 Elizabeth Johnson
 Jeremiah & Louisa Jones
 Scott & Christina Josey
 Ronald & Judith Kosiba
 Barbara Koza & Alyson R
 Aleman, POA
 L.R. & S.A. LaBonte
 Robert & Pauline LaChance
 Paul Lajoie &
 Raymond Lamiotte
 Louis Lane
 Jackie Mahoney
 Robert Mainville
 Robert & Julianne
 Marchenonins
 Kenneth Wade Marvin
 Timothy & Debra McKeon
 Marko & Pamela Nachtigall
 Anna Naum
 Joan Nelson & Sue Kilborn
 Michele Palulis
 Tyra Penn-Gesek
 Charlie Pious
 Patricia Poirier
 Kenneth Przystas
 Kiley Putnam
 Richard & Marjorie Ranger
 Robert & Marilyn Rath
 Samuel & Lynn Resnick
 Lawrence Ring &
 Patricia Levesque
 Mark Rupp
 Bridget Scanlon
 Bradford & Mary Seaward
 Thomas & Gail Seiferman
 Charles Seivard
 Andrew & Lisa Semancik
 Seniors from the Pomfret
 Senior Center
 Kenneth & Deborah
 Sherman
 Lorraine Snay
 Jo Ann Szela
 Normand Tessier &
 Cynthia Dunne
 Richard & Lorraine Tremblay
 Frank & Darlene Tremont
 Mary Vitale
 Richard & Terri Warren
 Doe West
 Frederick & Rachel Wojick

Lewis Worley
 William & Kathleen
 Zamagni
 Michael Zimmer

Gifts in Memory of:

Paul Dery
 Robert Miller
 RoseAnne Monaco
 James Sharples
 Bobby Tichnell
 Catherine Thompson
 Marsha Tripp
 Kevin Walsh
 Ryan French

Given in the name of:

Tom Angelo
 Kevin Barlow, Jr.
 Peter, Eric and Laura
 Bembeneck
 Denise Bessette
 Frances Bettencourt
 Stephen & Jill Bourbeau
 David & Tammy
 Chapdelaine
 Carmen Charbonneau
 Eric & Dianna Daley
 William & Cheryl Desjardin
 Laura-Lee Edwards
 Vicki Favreau
 Bob & Adrienne Fournier
 Mike & Chelsea French
 Donald Froehlich
 Donna Grant
 Lawrence & Erica Groh
 Norman & Celeste Guimont
 Col. Joel & Capt. Kathleen
 Hiatt
 Jacqueline Johnson
 Richard & Katherine Keefe
 Dennis & Kathie Kelly
 Kellie Kubica
 Eugene Lariviere, Sr.
 Dora Sheldon Laroe
 Peter & Virginia Lusa
 Claire Mackowiak
 Peter Noheimer
 Kim Nowell
 David & Linda Peiczarka
 Ben & Becky Pluta
 David & Donna Pomes
 Arthur & Dianna Rebello
 Kevin & Linda Shaw
 Stanley & Marion Shaw
 Edward Spillers
 Russell St. Jean
 Len Tellier
 Allan & Carrie Walker
 Richard & Janet Watson
 Doe West
 Curtis & Kathy Young
 Douglas & Donna Young
 Timothy & Wendy Young



Zachary Stoddard - Troop 26 - built three beautiful tables for our seniors.



Pete the Cat traveled all over northeastern Connecticut in his Can-do Shoes.



Students from Pomfret School organized the Cinderella Project to provide prom attire this year.

TEEG Volunteers and In-Kind Donors

LEGEND

- 🕒 = Volunteer to TEEG
- ❤️ = Donor to Have a Heart Charity Auction
- 👏 = In-Kind Donors

85 Main ❤️
 A Block Away Construction ❤️👏
 Aces Defense ❤️
 Adams Fitness Solutions ❤️
 Aesthetics Hair Studios. LLC ❤️
 Animal Care Experts 👏
 Angell House Design 🕒👏
 Automatic Rolls 👏
 bankHometown Woodstock Office 👏
 Bayside Resort ❤️
 Beardsley Zoo ❤️
 Beltone 👏
 Ben's Beans ❤️
 Beth Benoit Photography ❤️
 Big Gary's Discount Liquors ❤️
 Bill's Bread and Breakfast ❤️
 Body by Design 👏
 Boston Bruins/Boston Professional Hockey Association, Inc ❤️
 Boston Red Sox Community Relations ❤️
 Brodhill Realtors 👏
 Brooklyn Agricultural Society 👏
 Brooklyn Spirits ❤️
 C.R.F., INC. 👏
 Cargill Detail Center ❤️
 Chase Building Supply of CT, Inc. ❤️
 Chase Graphics Inc. ❤️
 Chase Road Growers 👏
 Christ Church of Pomfret 👏
 Cleaners Depot 👏
 CoCo's Cottage ❤️
 Community Fire Department 👏
 Congregational Church of Thompson, Inc. 👏
 Connecticut Audubon Society at Pomfret ❤️
 Connecticut National Golf Club ❤️
 Connecticut State Employees Association 👏
 Connecticut State Police Troop D 👏
 Cost Cutter Liquors of Dayville ❤️
 Crabtree & Evelyn ❤️👏
 Creation Church 🕒👏
 Dan Landry Electric Inc ❤️
 Danielson Surplus Sales Inc. ❤️👏
 Daughters of the Holy Spirit 👏
 Davis Farmland & Mega Maze ❤️
 Day Kimball Healthcare 👏
 Day Kimball Hospital Employees 👏
 DBA M. Provost Trucking & Landscape Products ❤️👏
 DBA Samuel Watson Bed & Breakfast ❤️

Deb's Place ❤️
 Dell/EMC Logistics 🕒
 Dollar General 👏
 Dumas' Decorating Center 👏
 E + R The Campus Laundry 👏
 E. Woodstock Congregational Church 👏
 E.J. Stochaj Insurance Agency Inc. ❤️
 Earthworks ❤️
 EcoTarium ❤️
 Edaville Family Theme Park ❤️
 Eighty Ates Bistro ❤️
 Elizabeth's Farmhouse ❤️
 Emanuel Lutheran Church 👏
 Empire Travel ❤️
 Epic Beauty Photography and Makeup 👏
 Essex Steam Train and Riverboat ❤️
 Eversource 🕒
 F.R.E.S.H. Woodstock Academy 👏
 Fiberoptics Technology, Inc. 👏
 Fiddlehead Farms 👏
 Fire & Iron Station 159 👏
 First Congregational Church of Woodstock 👏
 Flick Food Service 👏
 Floral & Gifts of OWC ❤️
 Flying Carpet Studio ❤️
 Foxwoods Resort Casino ❤️
 Friendly Spirits Liquor Store ❤️
 Frito Lay, Inc. 👏
 Garden Gate Florist ❤️
 General Mills 👏
 Gilman & Valade Funeral Homes and Crematory ❤️
 Green Valley Crossing 👏
 Green Valley Glass ❤️
 Gregory M. Gazzola, DMD LLC 👏
 Grill 37 ❤️👏
 G-Seven Caterers ❤️👏
 Guida's Dairy 👏
 Harrisville Golf Course ❤️
 Hartford Yard Goats ❤️
 Heirloom Food Company and Café ❤️
 Henry's Diner and Variety ❤️
 Hill Top Contractors LLC ❤️
 Hindsight Farm 👏
 Hope Community Church 👏
 Horses, Etc. Design Studio 👏
 Interfaith Human Services 👏
 Internal Medicine of DKH 👏
 International Paper 👏
 International Tennis Hall of Fame ❤️
 Intrepid Sea, Air & Space Museum ❤️
 Jamie Aubin Photography 👏
 Jessica Tuesday's Deli ❤️
 Jilly's Jubilee ❤️

Killingly Parks and Recreation ❤️
 Kobago Express LLC 👏
 Koinonia School of Sports ❤️
 K's Sweet Spot ❤️
 La Gondola Providence Inc ❤️
 LaDonna's ❤️
 Lake Compounce ❤️
 Lake Road Generating Company 👏
 Lapsley Orchards 👏
 Law office of Alan Scott Herman 👏
 Lee Ann's Hair Boutique ❤️
 Linemaster Switch Corporation 👏
 Long Pond Hearth and Home LLC 👏
 Longmeadow Automotive 👏
 Lord Thompson Manor ❤️
 Lucky's ❤️
 MAD Communications ❤️🕒
 Main St Grille ❤️
 Mansion at Bald Hill ❤️
 Marianapolis Preparatory School ❤️👏
 Mary R. Fisher Elementary Faculty & Staff 👏
 Mary R. Fisher Elementary PTO 👏
 Mary R. Fisher Elementary School Students 👏
 Massachusetts Museum of Contemporary Art ❤️
 McClellan Elms Inn 👏
 Melissa Amlaw Fitness ❤️
 Midtown Fitness Center 👏
 Mohegan Bowl Webster ❤️
 Mohegan Sun ❤️
 Mom's Club of Woodstock 👏
 Mountainside Farms 👏
 Muddy Brook Fire Dept., Inc. 👏
 Mystic Aquarium ❤️
 NECOGG 👏
 Northeast Placement Services ❤️
 Network, Inc. 👏
 New England Patriots Charitable Foundation 👏
 New Roxbury Liquors ❤️
 Nikki's Dog House ❤️
 Noll's Coffee Bar ❤️
 Noodles the Clown: The Magic of Nancy ❤️
 Northeast Connecticut Dental Associates ❤️
 Northeast Wine and Spirits ❤️
 Norwich Sea Unicorns ❤️
 Organic Valley 👏
 Peabody Essex Museum ❤️
 Periwinkles 👏
 Pomfret Public Library 👏
 Pomfret School 👏
 Pomfret School Students 🕒
 Pomfret Wine and Spirits ❤️
 Price Chopper - Golub Corp ❤️
 Providence Bruins ❤️

Providence Children's Museum ❤️
 Putnam Bank a division of Centerville Savings Bank 👏
 Putnam Ford Inc. ❤️
 Putnam Helping Hands Transition Program 🕒
 Putnam High School 👏
 Putnam Spirits ❤️
 Putnam Supermarket, Inc. ❤️
 Quiet Corner Consulting ❤️🕒👏
 Quiet Corner Montessori School 👏
 Quiet Corner Physical Therapy ❤️
 Quinebaug Seventh Day Adventist Church 👏
 Raceway Golf Club ❤️👏
 Rawson Materials ❤️👏
 Red's Good Vibes 👏
 Residents of the Town of Thompson 👏
 Residents of the Town of Woodstock 👏
 Retail Energy Analytics, LLC 👏
 Roseland Park and Community Garden 👏
 Sacred Heart Church of Jesus 👏
 Saints Constantine & Helen Greek Orthodox Churches 👏
 Salem Trolley Tour ❤️
 Salem Wax Museum ❤️
 Salem Witch Museum ❤️
 Savage Systems ❤️🕒👏
 Sawmill Pottery ❤️
 SERAC 👏
 Service Master ❤️👏
 Signature Limousine LLC ❤️
 Skeeters Toy Box ❤️
 Solair Recreation 👏
 Soleil & Suns Bakery LLC ❤️
 Southwick's Zoo ❤️
 Sprucedale Gardens Nursery & Greenhouse ❤️
 St Phillips Church 👏
 St. Joseph's School ❤️👏
 St. Stephen's Church 👏
 Steve Bousquet's Appliance & TV ❤️👏
 StoryLand ❤️
 Sunny Discount Liquors ❤️
 Superior Bakery 👏
 Sweet Evalina's ❤️
 Taraesthetics ❤️
 Taylor Brooke Winery ❤️
 The Country Garden 👏
 The Courthouse Bar and Grille ❤️
 The Crossings Restaurant & Brew Pub ❤️
 The Farmers Plate 👏
 The Hancock Inn and Fox Tavern ❤️
 The Ice Box 👏
 The Lawn Mower Man 👏
 The Loomis Team LLC ❤️
 The Rectory School 🕒

SHARING

CARING

LOVING

REACHING

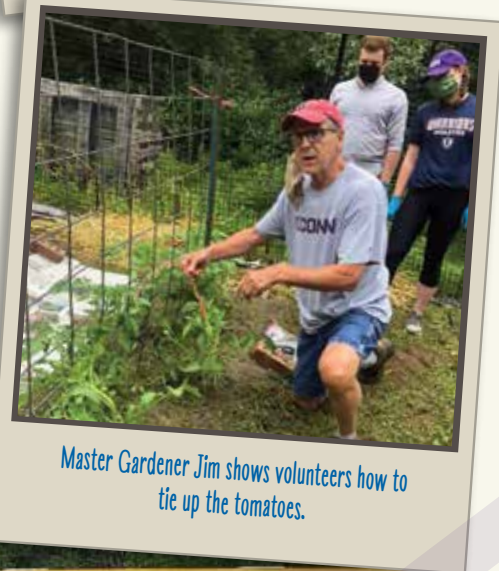
SERVING

GIVING

- The Stomping Ground ♥
- The Vanilla Bean Café ♥
- Thompson House of Pizza ♥ 🍷
- Thompson International Speedway LLC ♥
- Thompson Lions Club 🍷
- Thompson Little League 🍷
- Thompson Liquors ♥
- Thompson Middle School 🍷
- Thompson Middle School 4-H 🍷
- Thompson Middle School Honor Society 🍷
- Thompson Public Library 🍷
- Thompson Public Schools 🍷
- Thompson Recreation Dept. 🍷
- Tourtellotte Memorial High School 🍷
- Tourtellotte National Honor Society 🍷
- Tower Hill Botanical Garden ♥
- Tractors 2 Trimmers LLC ♥
- Travelers Championship ♥
- Travelers Shell ♥
- Triple C Cakes ♥ 🕒 🍷
- UNICORR/Nutmeg Container ♥
- United Natural Foods, Inc. 🍷
- Unitarian Universalist Church Brooklyn 🍷
- Vandi Auto Supply Inc. 🍷
- Venture Communications & Security LLC ♥
- Verizon Wireless ♥
- Veteran's Coffee House 🍷
- VFW Ladies Aux of Thompson 🍷
- Village Green Preschool 🍷
- W.B. Mason ♥
- Wachusett Mountain ♥
- Wadsworth Atheneum Museum of Art ♥
- Wal Mart #1980- Putnam 🍷
- WEBCO 🍷
- Webster Muscular Therapy ♥
- Weiss, Hale & Zahansky Strategic Wealth Advisors ♥ 🕒 🍷
- Westford Hill Distillers ♥
- WINY Osbrey Broadcasting Company ♥
- Woodstock Academy 🍷
- Woodstock Creamery At Valleside Farm ♥
- Woodstock Elementary School Third Grade Students 🍷
- Woodstock Evangelical Covenant Church 🍷
- Woodstock Lions Club 🍷
- Woodstock Massage and Wellness ♥
- Woodstock Middle School 🍷
- Woolworks Ltd ♥
- Wrights Dairy Farm and Bakery 🍷
- YMCA ♥ 🍷
- Zion Lutheran Church of Oxford 🍷



National Honor Society at Tourtellotte Memorial High School Food Drive Challenge Winners - the Senior Class!



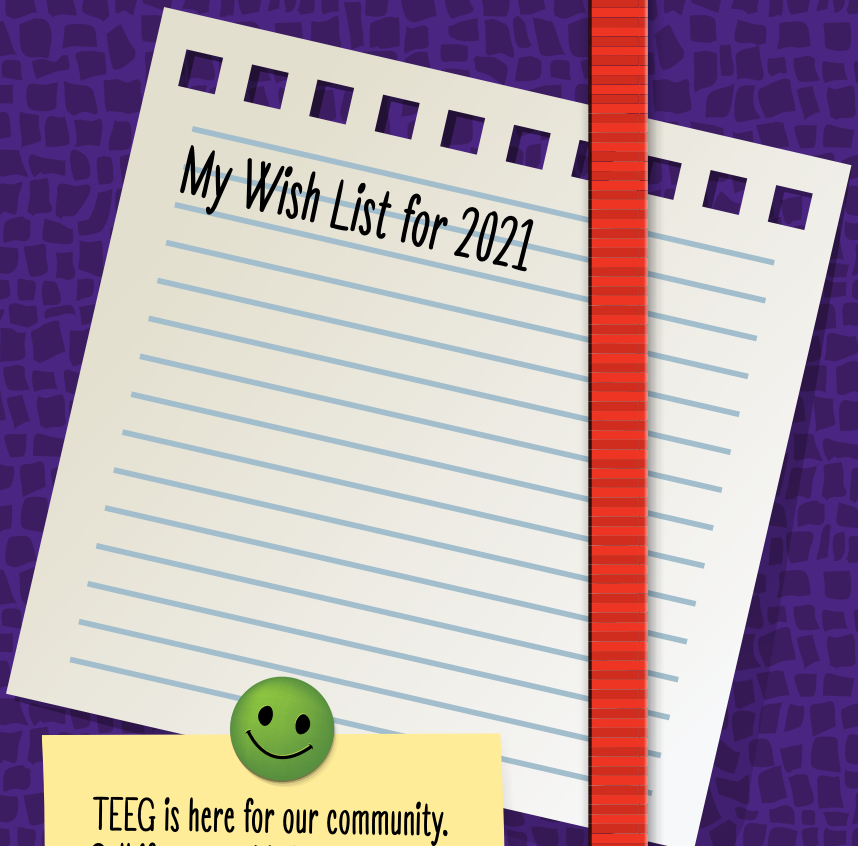
Master Gardener Jim shows volunteers how to tie up the tomatoes.



Thanks to our creative team of: Laura Moorehead of Angell House Design, Laura Bembeneck and Mary Ann and Kyle Dostaler of MAD Communications for another beautiful annual report!



Logo w/ return address
Mailing indicia
To be printed in by Chase?



TEEG is here for our community.
Call if you need help or reach out
if you can help.

Visit our website and follow us on
Facebook @TEEGOnline to learn
more and take action.



©2020 TEEG. All rights reserved.